

**TOSHIBA**

# Toshiba Storage Diagnostic Tool

Version 1.30.8920(20170601)

**User's Manual  
Version 04**



## **Notice**

The information contained in this manual, including but not limited to any product specifications, is subject to change without notice.

TOSHIBA ELECTRONIC DEVICES & STORAGE CORPORATION AND ITS SUBSIDIARIES AND AFFILIATES ("TOSHIBA") PROVIDE NO WARRANTY WITH REGARD TO THIS MANUAL OR ANY OTHER INFORMATION CONTAINED HEREIN AND HEREBY EXPRESSLY DISCLAIM ANY IMPLIED WARRANTIES OF MERCHANTABILITY OR FITNESS FOR ANY PARTICULAR PURPOSE WITH REGARD TO ANY OF THE FOREGOING. TOSHIBA ASSUMES NO LIABILITY FOR ANY DAMAGES INCURRED DIRECTLY OR INDIRECTLY FROM ANY TECHNICAL OR TYPOGRAPHICAL ERRORS OR OMISSIONS CONTAINED HEREIN OR FOR DISCREPANCIES BETWEEN THE PRODUCT AND THE MANUAL. IN NO EVENT SHALL TOSHIBA BE LIABLE FOR ANY INCIDENTAL, CONSEQUENTIAL, SPECIAL, OR EXEMPLARY DAMAGES, WHETHER BASED ON TORT, CONTRACT OR OTHERWISE, ARISING OUT OF OR IN CONNECTION WITH THIS MANUAL OR ANY OTHER INFORMATION CONTAINED HEREIN OR THE USE THEREOF.

## **DISCLAIMER**

We assume no responsibility whatsoever for any damage or loss resulting from the use of this application. THIS APPLICATION IS PROVIDED "AS IS" WITHOUT WARRANTIES OF ANY KIND. WITHOUT LIMITING THE FOREGOING, TOSHIBA DISCLAIMS ALL WARRANTIES AND REPRESENTATIONS OF ANY KIND RELATING TO THE APPLICATION, WHETHER EXPRESS, IMPLIED, OR STATUTORY, INCLUDING WITHOUT LIMITATION THE IMPLIED WARRANTIES OF MERCHANTABILITY, FITNESS FOR A PARTICULAR PURPOSE, ACCURACY, OR NONINFRINGEMENT OF THIRD PARTY RIGHTS. TOSHIBA DOES NOT WARRANT THAT THE OPERATION OF THE APPLICATION WILL BE UNINTERRUPTED, ERROR-FREE, OR SECURE. ANY INSTALLATION AND/OR USE OF THE APPLICATION SHALL BE AT YOUR OWN RISK.

## **About Trademarks**

Windows is a registered trademark of Microsoft Corporation in the United States and/or other countries. Other company names, product names, and service names may be trademarks of their respective companies.

## Contents

Notice .....	2
DISCLAIMER .....	2
About Trademarks.....	2
Revision History of Storage Diagnostic Tool .....	4
Safety Precautions .....	5
1. Introduction .....	7
2. Requirements.....	8
3. Diagnostic Tool Usage.....	9
4. Summary.....	10
5. Drive Information.....	11
6. Diagnostic Scan .....	12
7. Zero Filling Function.....	15
Need Help? .....	18

## Explanation of marks in this document



### Information

Describes functions, restrictions, and matters for reference.



### Note

Describes additional instructions and notes.

## Revision History of Storage Diagnostic Tool

Version	Revision Date	Description
01	December 2016	Initial version
02	January 2018	Change company name. Add the supported storage and the supported OS. Improvement of pre-process in Diagnostic test.
03	July 2021	Change version of Software, support storage and support OS.
04	November 2024	Clarify Supported Storage.

## Safety Precautions



This section lists important precautions which users of our product(s) (and anyone else) should observe in order to avoid injury to human body and damage to property and to ensure safe and correct use of our products. Please be sure that you understand the meanings of the labels and graphic symbols described below before you move on to the detailed descriptions of the precautions, and comply with the precautions stated.

### Explanation of Labels

<b><i>NOTICE</i></b>
Indicates practices that may cause property damage <sup>1</sup> and other problems, but not personal injury




1. Property damage is defined as damage to a customer or third party's machines and equipment.

### Explanation of Graphic Symbols

 <b>Prohibited</b>	 <b>Instructions</b>
Indicates prohibited actions.	Indicates actions that must be undertaken for safety purposes.





## General Use

### NOTICE

 <b>Prohibited</b>	Do not remove the drive from your system while the system is powered on. It may cause damage to the drive.
 <b>Prohibited</b>	Do not change any configuration files of this application. To do so could harm your system.
 <b>Instructions</b>	If your system or the Toshiba Storage Diagnostic Tool is terminated abnormally while Toshiba Storage Diagnostic Tool is running, your system or the drive may be damaged or data may be lost. Please backup your data before you use the Toshiba Storage Diagnostic Tool.

## Use of Diagnostic Scan and Zero Filling Function

### NOTICE

 <b>Prohibited</b>	Do not power off while the Diagnostic Scan or Zero Filling function is running as this could corrupt the drive or your system.
 <b>Prohibited</b>	Do not run the Diagnostic Scan or Zero Filling function on a battery driven system. Be sure to supply power to the system via the AC adapter.
 <b>Instructions</b>	Be sure to backup your data before running the Zero Filling function because data overwritten by the Zero Filling function cannot be recovered.
 <b>Instructions</b>	If your system or the Toshiba Storage Diagnostic Tool is terminated abnormally while the Zero Filling function is running, the drive may be in the password protection state or the password lock state. If the drive is in the password protection state or the password lock state, please contact a support center.

# 1. Introduction

This manual describes the procedure for using Toshiba Storage Diagnostic Tool (hereinafter “Diagnostic Tool”). Please read carefully the DISCLAIMER and Safety Precautions section before using the Diagnostic Tool application.

The Diagnostic Tool is software for the diagnostic scan of Toshiba External HDD and Internal HDD (hereinafter “Toshiba Storage”).

The Diagnostic Tool provides the following features:

- **Diagnostic Scan**  
Scans all or part of the Toshiba Storage for read errors
- **Zero Filling Function**  
Overwrites the whole user data area with zeros data pattern on the Toshiba Storage.

## 2. Requirements

The Diagnostic Tool requires the following:

a) Supported Storage

The latest Supported Storage can be viewed online at [https://www.canvio.jp/en/support/download/hdd/ot\\_sdt/en.htm](https://www.canvio.jp/en/support/download/hdd/ot_sdt/en.htm)

b) System Requirements

The computers that satisfy the requirements of a supported operating system.

- Interface: USB 3.2 Gen 1 / USB 2.0 / Serial ATA
- 4.92 MB of available disk space
- Supported Operating Systems:  
The latest Operating System ("OS") compatibility can be viewed online at [https://www.canvio.jp/en/support/download/hdd/ot\\_sdt/en.htm](https://www.canvio.jp/en/support/download/hdd/ot_sdt/en.htm)
- Screen Resolution: 32 bits color and greater than 800 x 600 pixels



**Information**

- When DPI size is set at more than 100%, the Diagnostics Tool application window may not be displayed properly.



**Note**

- Power management controls need to be disabled while the Diagnostics Tool is running in case the system is in a Stand-By or Hibernate mode.



### 3. Diagnostic Tool Usage

#### 3.1. Preparing the Diagnostics Tool

Save the “ToshibaStorageDiagnosticTool.exe” to a folder on your computer.



**Note**

- Requires username and password of administrator account in order to be saved by a general user.

#### 3.2. Starting the Diagnostic Tool

You can start the Diagnostic Tool application by the following ways:



**Note**

- Requires username and password of administrator account in order to be started by a general user.

- 1) Double-click the “**ToshibaStorageDiagnosticTool.exe**”.
- 2) Select language and click “**OK**”.

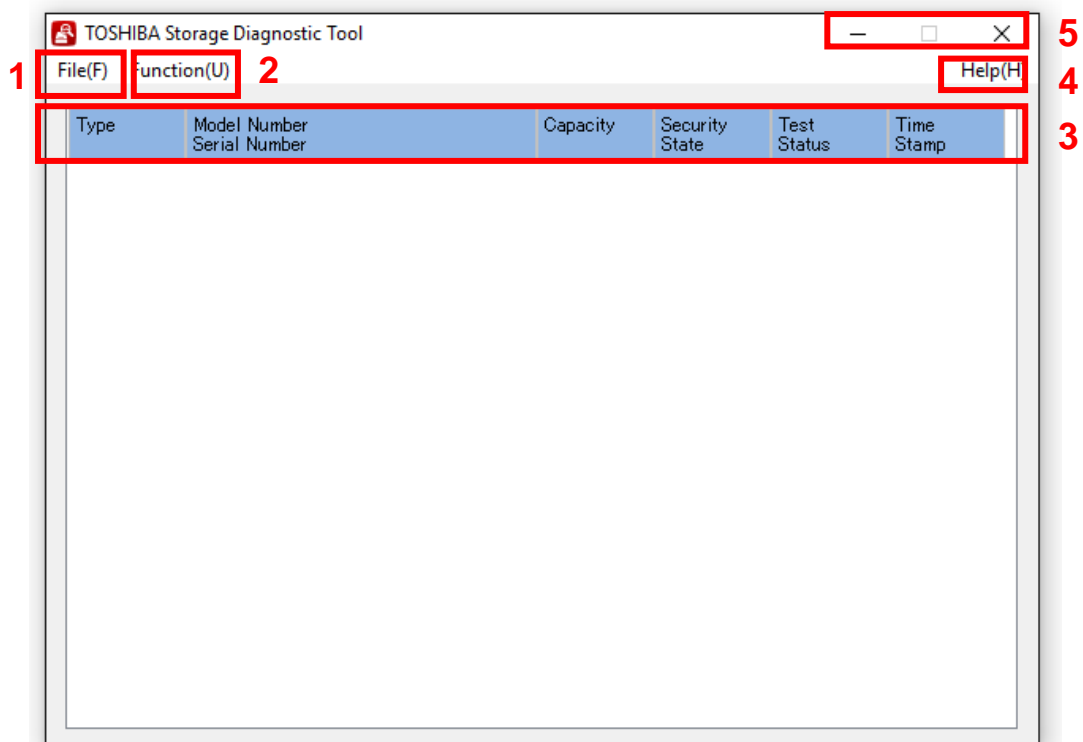


- 3) Review the “**End User License Agreement**” using the scroll bar. If you agree with it, click “**I Accept**”.



- 4) Finish.

## 4. Summary



### 1) File(F)

- Refresh : Refresh of Drive.
- View Log : Displays log file (diag\_result\_log.txt).
- Exit : Closes Diagnostic Tool application.

### 2) Function(U)

- Start/Stop Diagnostic Scan : Goes to the Diagnostic Scan screen (See 6. Diagnostic Scan).
- Start/Stop Zero Filling : Goes to the Zero Filling screen (See 7. Zero Filling).

### 3) Drive Information

- : Displays Drive Information (See 5. Drive Information).

### 4) Help(H)

- About this tool : Displays version of the Diagnostic Tool application.
- End User License Agreement : Displays End User License Agreement.

### 5) Title Button

- \_ (Minimize) : Minimizes the Diagnostic Tool application.
- X (Exit) : Closes the Diagnostic Tool application.

## 5. Drive Information

Displays the list of all available drives on your system.

Type	Model Number Serial Number	Capacity	Security State	Test Status	Time Stamp
USB	TOSHIBA External USB 3.0 USB Device (TOSHIBA MQ01UBD100)	931.5GB	Locked	---	
USB	TOSHIBA External USB 3.0 USB Device (TOSHIBA MQ01UBB200)	1.8TB		---	

**TEST SAMPLE**

- 1) **Type** : Displays Interface of Drive.
- 2) **Model Number** : <External Hard Drive>  
: Displays Model Name of the External Hard Drive (Model Number of Internal Hard Drive).  
: <Internal Hard Drive>  
: Displays Model Number of Internal Hard Drive.
- 3) **Serial Number** : Displays Serial Number of the Drive.
- 4) **Capacity** : Displays Capacity of Drive \*1.
- 5) **Security Status** : Displays Security Status (Unlocked, Locked, Frozen or Blank).
- 6) **Test Status** : Displays the test result of the Diagnostic Scan or the Zero Filling.  
: Displays the ratio of task while the Diagnostic Scan or the Zero Filling is running.
- 7) **Time Stamp** : Displays the end time of the Diagnostic Scan or the Zero Filling.  
: Displays the start time of task while the Diagnostic Scan or the Zero Filling is running.

\*1 One Gigabyte (1GB) means  $10^9 = 1,000,000,000$  bytes and one Terabyte (1TB) means  $10^{12} = 1,000,000,000,000$  bytes using powers of 10. A computer operating system, however, reports storage capacity using powers of 2 for the definition of  $1\text{GB} = 2^{30} = 1,073,741,824$  bytes and  $1\text{TB} = 2^{40} = 1,099,511,627,776$  bytes, and therefore shows less storage capacity. Available storage capacity (including examples of various media files) will vary based on file size, formatting, setting, software and operating system and other factors.

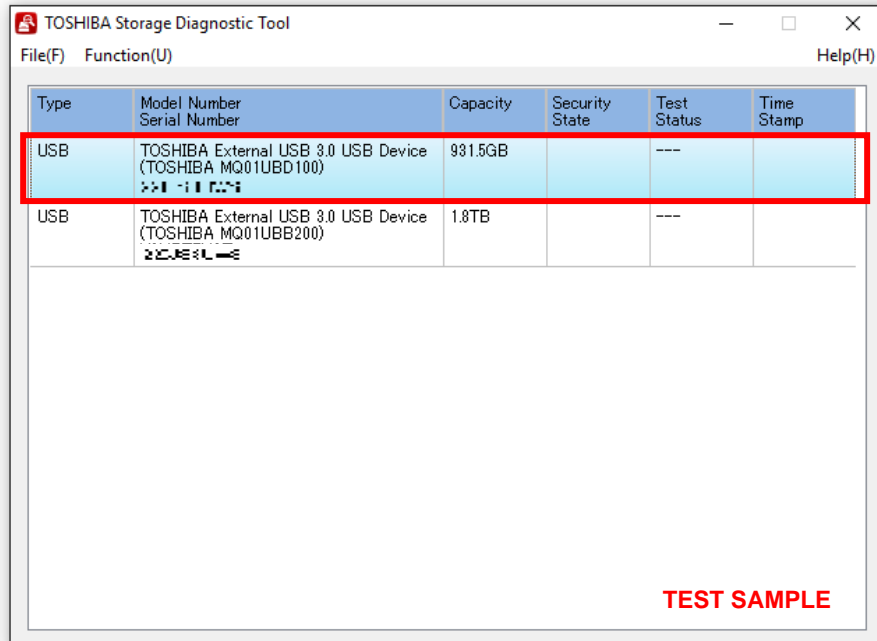
## 6. Diagnostic Scan

The Diagnostic Scan can scan all or part of the Toshiba Storage for read errors.

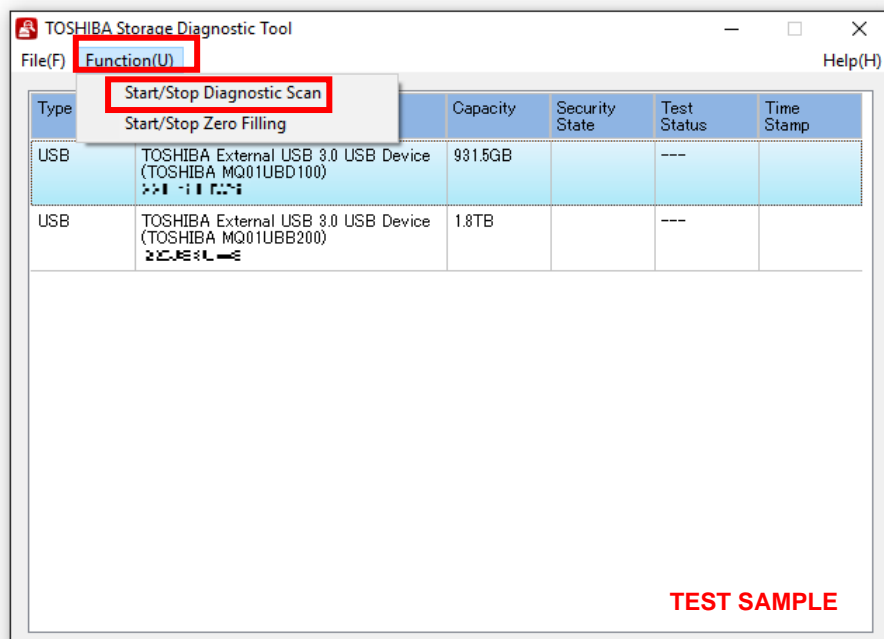
There are two kinds of the Diagnostic Scan: Quick Scan and Full Scan.

The Quick Scan runs a self-test routine on one part of the drive. Typically, it takes several minutes to complete a Quick Scan. The Full Scan runs a self-test routine on the whole drive. Typically, it may take several hours or more to complete a Full Scan. The result of executing the Diagnostic Scan can be viewed in “**Test Status**”.

1) Display the list of all available drives on your system. In the Drive list, click the drive that you want to scan.

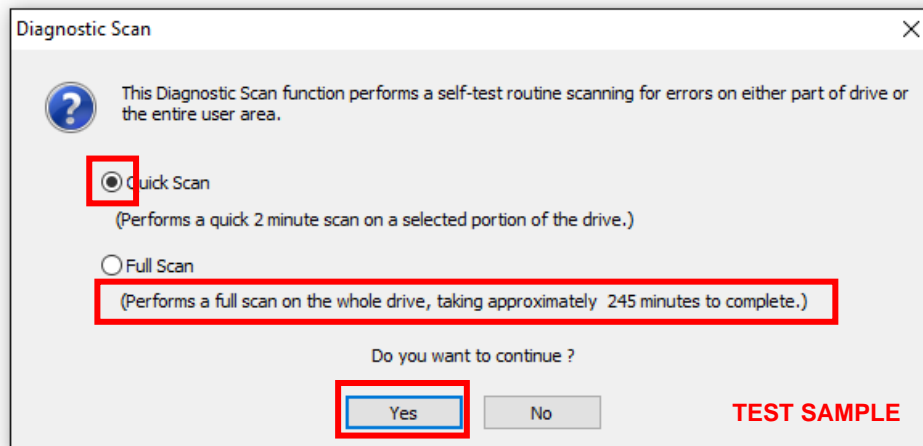


2) Click “**Function(U)**” and click “**Start/Stop Diagnostics Scan**”.



3) Select “**Quick Scan**” or “**Full Scan**” then click “**Yes**” to scan the selected drive.

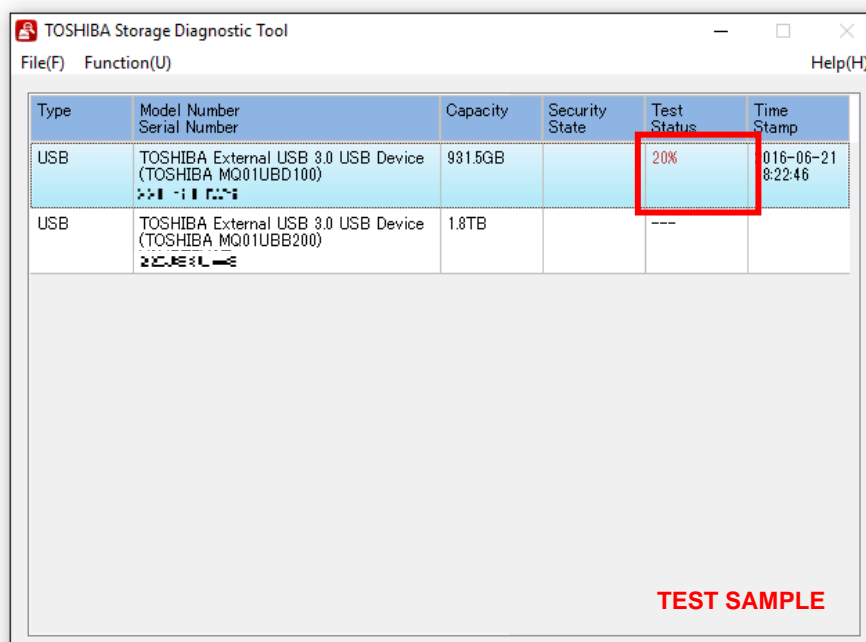
- Quick Scan : Check this option to run self-test routine on one part of the selected drive.
- Full Scan : Check this option to run self-test routine on all of the selected drive.  
Full Scan will be displayed the estimated required time.



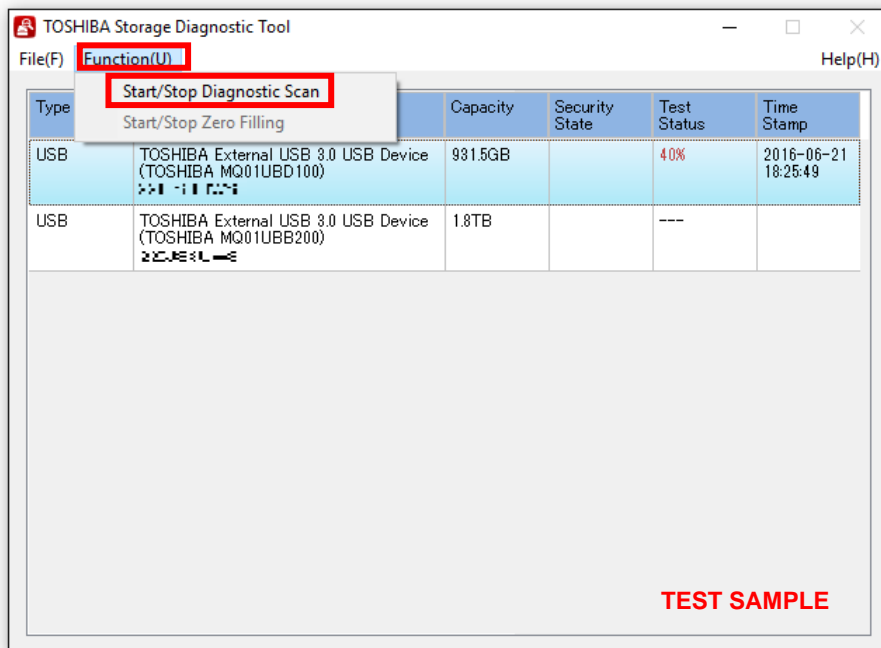
**Information**

- Full Scan time may exceed the estimated required time depending on the operating conditions.

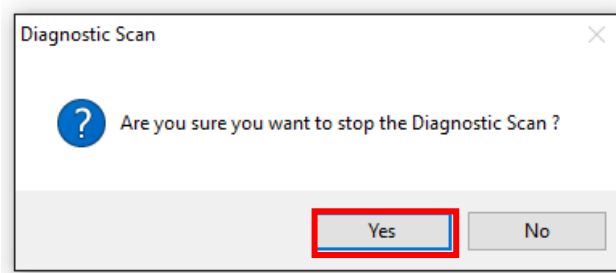
In “**Test Status**”, displays ratio of scanning task.



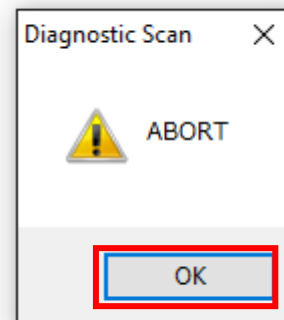
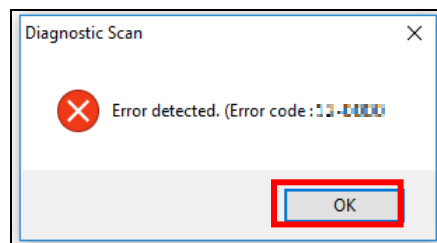
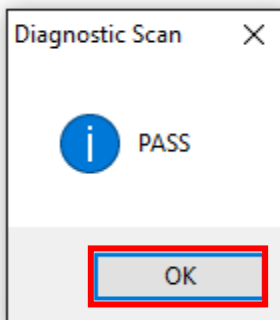
4) During execution of the scan, if you would like to stop the scan process, click "**Start/Stop Diagnostics Scan**".



Click "**Yes**" to stop the scan process.




5) "**PASS**" or "**Error detected.**" is displayed when the scan is terminated normally. "**ABORT**" is displayed if you stop the scan process, and click "**OK**" to finish.



## 7. Zero Filling Function


The Zero Filling function overwrites the whole user data area with zero data pattern on the selected drive. This process takes longer, and the completion time depends on the capacity and the condition of the drive. Please make sure to back up your necessary data before starting the Zero Filling process.



**Information**


- The Zero Filling function does not work with the system drive.
- The Zero Filling function isn't available on drive that the Diagnostic Tool stored.
- The Zero Filling function does not work with the password protection state or the password lock

Type	Model Number Serial Number	Capacity	Security State	Test Status	Time Stamp
USB	TOSHIBA External USB 3.0 USB Device (TOSHIBA MQ01UBD100) Z31BTVK7T	931.5GB	Locked	---	



**Note**

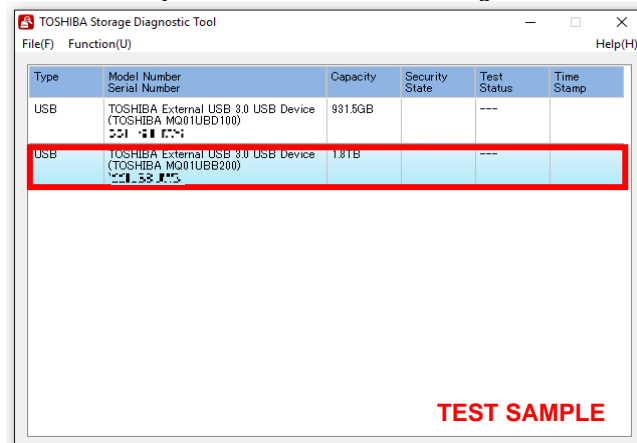
- Remove the password protection or the user password on the drive before running the Zero Filling function. (For information on how to remove the user password on the drive, refer to your system's user manual.)



**Instructions**

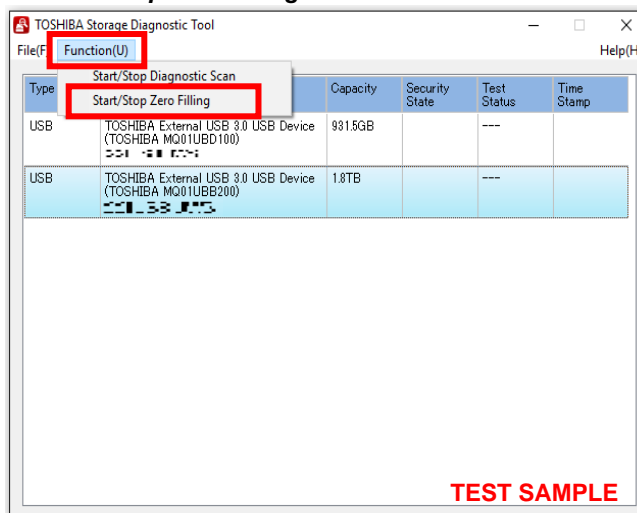
Be sure to backup your data before running the Zero Filling function because data overwritten by the Zero Filling function cannot be recovered.

1) On the Drive list, select the drive on which you want to run the Zero Filling function.



TEST SAMPLE

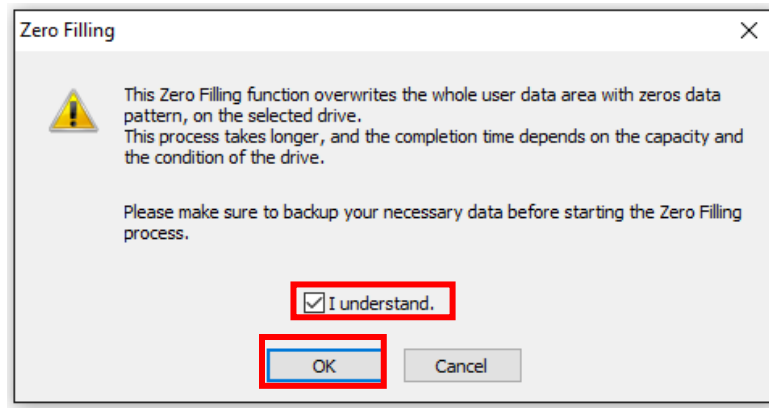
2) Click "**Function(U)**" and click "**Start/Stop Zero Filling**".



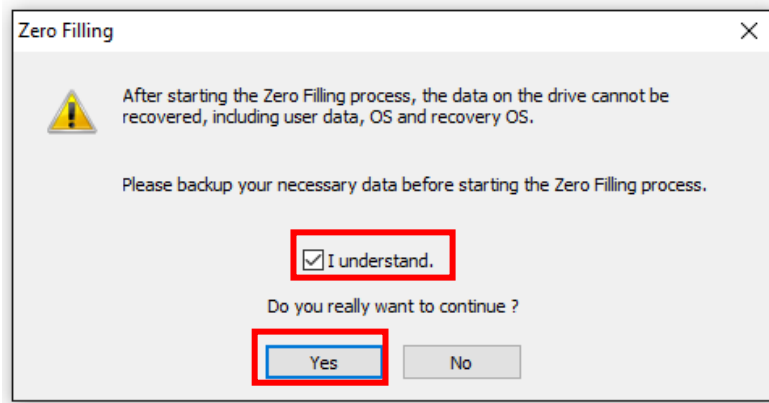
TEST SAMPLE

pg. 15

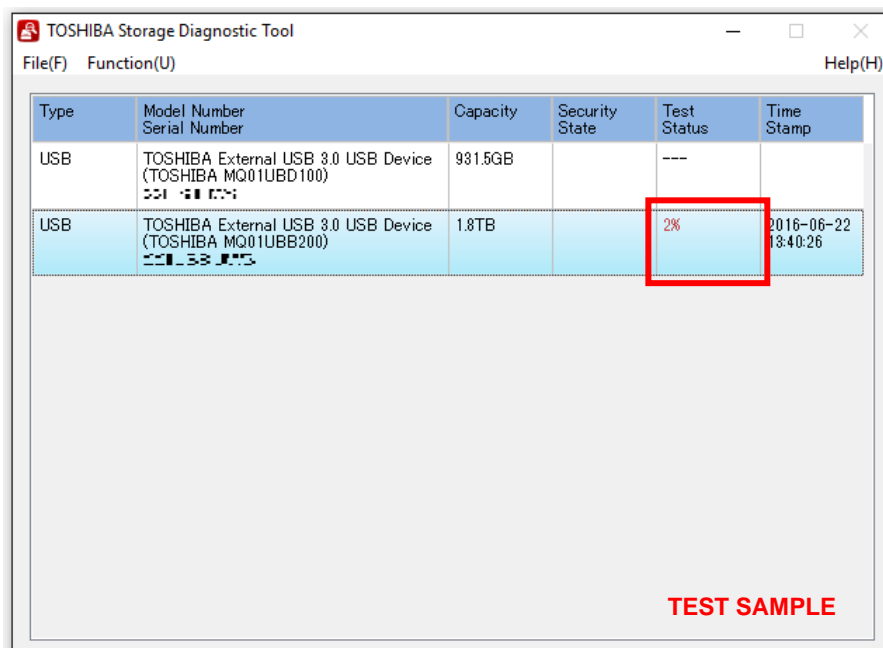
3) If you accept the conditions, check "***I understand***" and click "**Yes**"



4) If you accept the conditions, check "***I understand***" and click "**Yes**", and start the Zero Filling function.

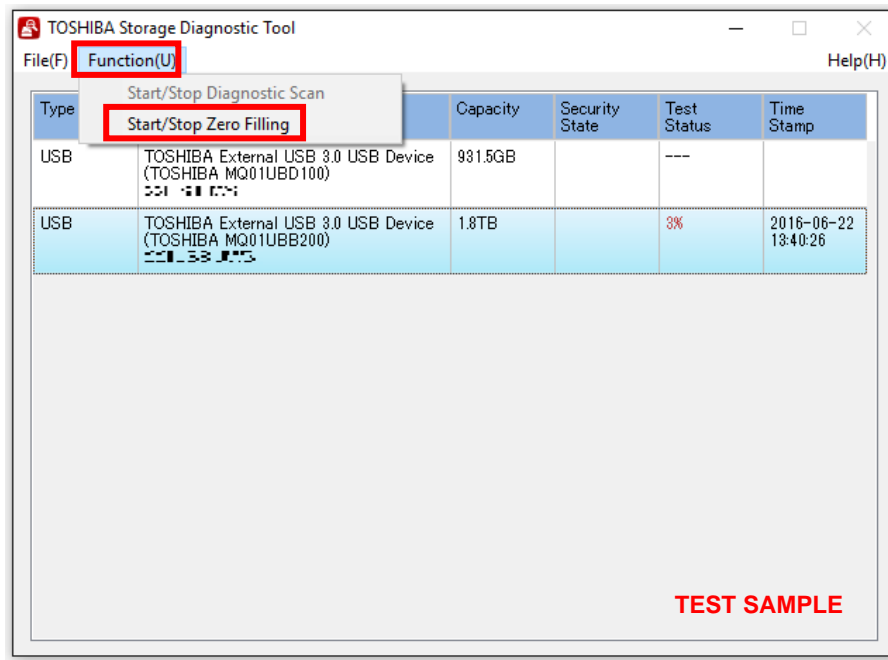


In "**Test Status**", displays ratio of Zero Filling task.

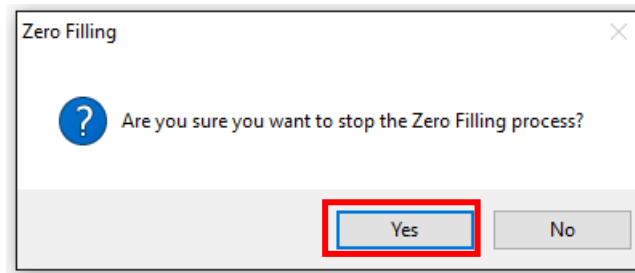




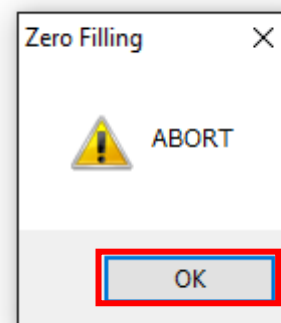
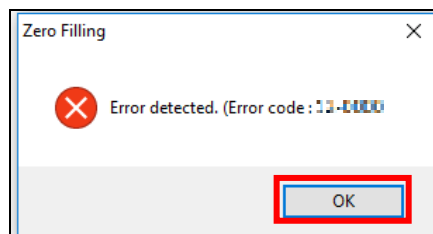
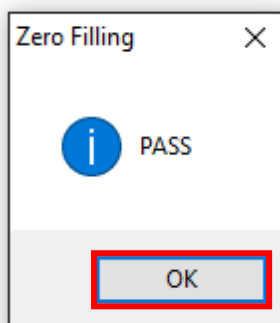
5) During execution of the Zero Filling function, if you would like to stop the Zero Filling function, click "**Start/Stop Zero Filling**".



Click "**Yes**" to stop the Zero Filling function.



6) "**PASS**" or "**Error detected.**" is displayed when the scan is terminated normally. "**ABORT**" is displayed if you stop the scan process, and click "**OK**" to finish.



## **Need Help?**

Please visit Toshiba's Support Web site.

<http://storage.toshiba.com/consumer-hdd/support>

## **Toshiba Electronic Devices & Storage Corporation**

© 2016-2024 TOSHIBA ELECTRONIC DEVICES & STORAGE CORPORATION, All Rights Reserved.